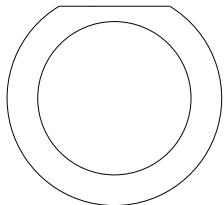


ASSEMBLY INSTRUCTION GYM

NOTE: DO NOT HANG WET TOWELS TO
DRY AS THE COLOUR WILL RUB OFF.
USE A FIRMLY WROUNG CLOTH TO
CLEAN. DO NOT USE DETERGENTS



A x 1



B x 1



C x 2



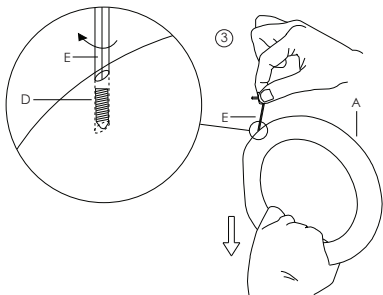
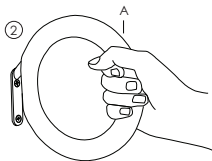
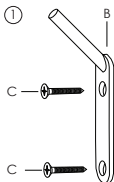
D x 1



E x 1



F x 2
For brick
wall



HAY